



PRODUCT CATALOGUE



www.ctxindia.com

ABOUT US

CTX is a premium brand offered by Delhi Cutlery Mart. Established in 1959 by the late Shri Prem Chand Jain, our company has built a legacy grounded in reliability, integrity, and an unwavering commitment to customer satisfaction.

Over the decades, we have achieved sustained growth through our focus on quality, innovation, and strategic partnerships. By working closely with technologically advanced manufacturing partners—particularly those utilizing cutting-edge Taiwanese expertise—we ensure that every CTX product meets the highest precision, strength, and performance standards.

This synergy empowers us to deliver reliable, precision-engineered fastening solutions that cater to the evolving needs of modern industries. At Delhi Cutlery Mart, quality is not just a benchmark—it is a guiding principle that shapes every aspect of our operations, from product sourcing to customer service.

As we continue to grow and adapt in a dynamic marketplace, CTX remains a symbol of trust, durability, and engineering excellence.

INDEX

Screw Data

1

CTX M.S. Chipboard Screw



3

CTX M.S. Drywall Screw



4

CTX M.S. Self Drilling Screw Flat Phillips



5

CTX M.S. Self Drilling Screw PAN Phillips



6

CTX M.S. Self Drilling Screw Truss Phillips



7

CTX M.S. Self Drilling Screw Hex Head



8

CTX M.S. Carriage Bolt



9

CTX M.S. Roofing Bolt



10

CTX M.S. Sheet Metal Screw



11

INDEX

CTX S.S. 410 Chipboard Screw



12

CTX S.S. 304 Chipboard Screw



13

CTX S.S. Sheet Metal Screw



14

CTX S.S. Drywall Screw



15

CTX S.S. Carriage Bolt



16

CTX S.S. Self Drilling Screw Flat Phillips



17

Product Range

18

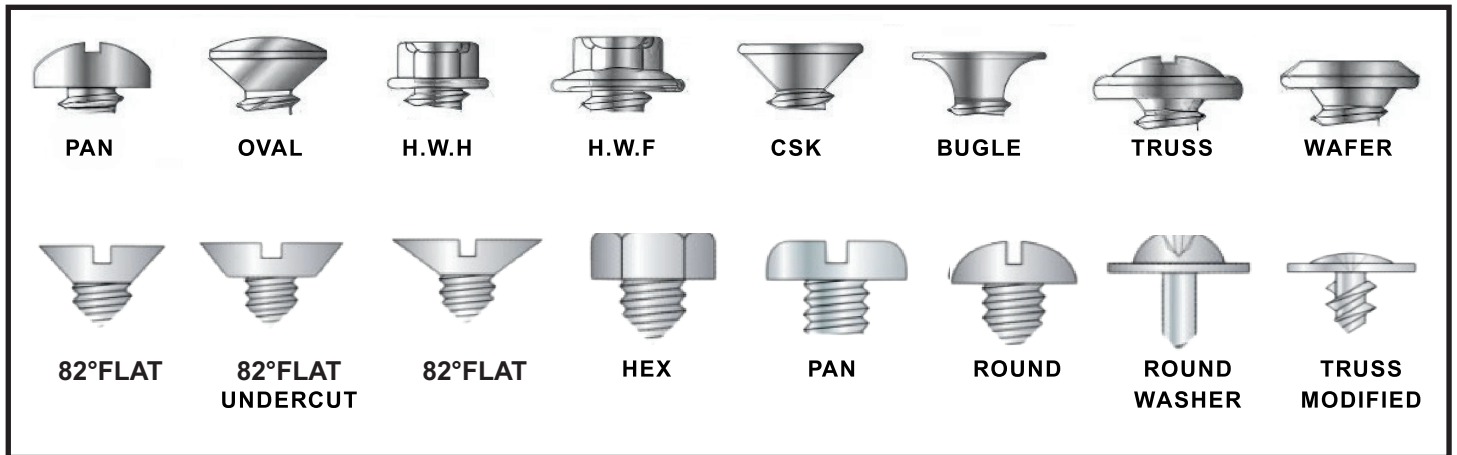
Manufacturing Process

19

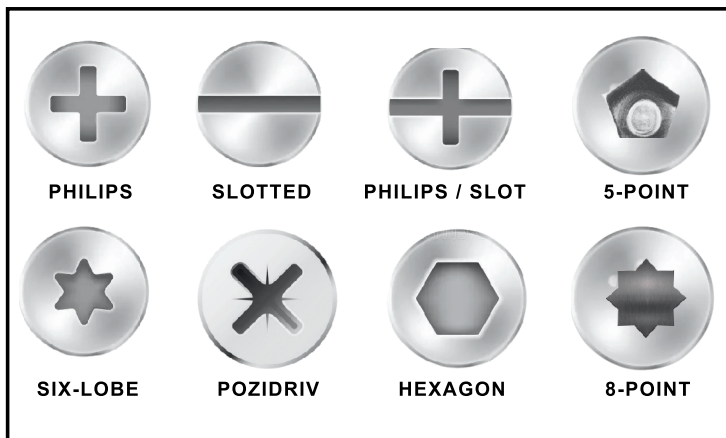


SCREWS DATA

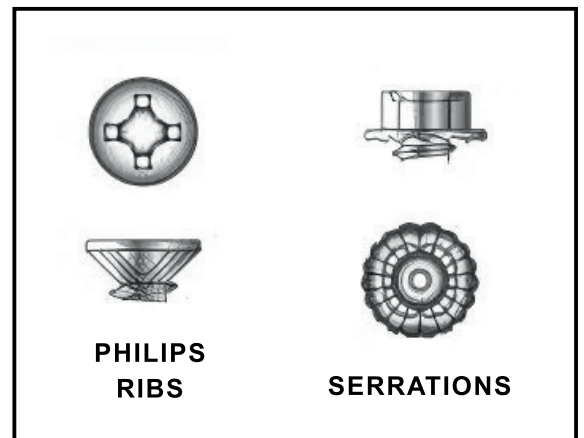
HEAD STYLES



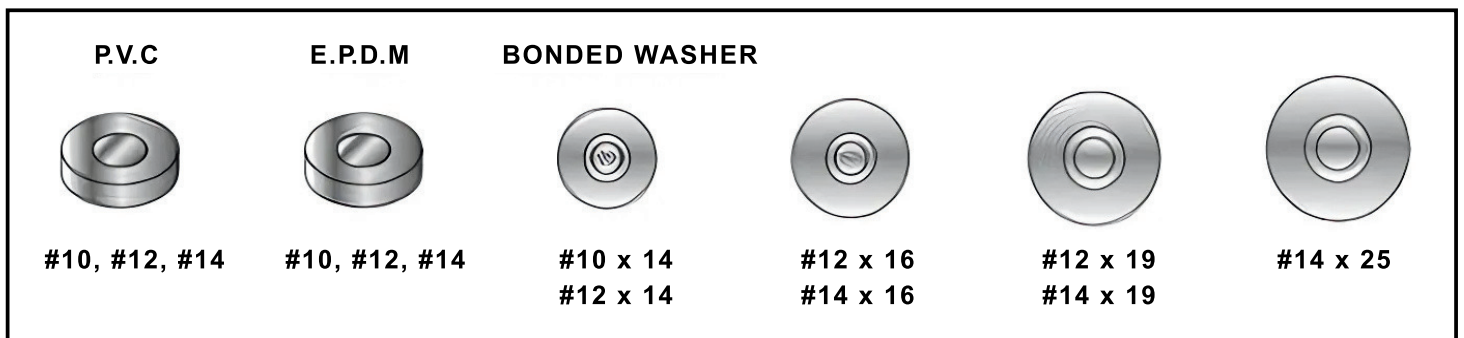
HEAD RECESS



UNDER HEAD

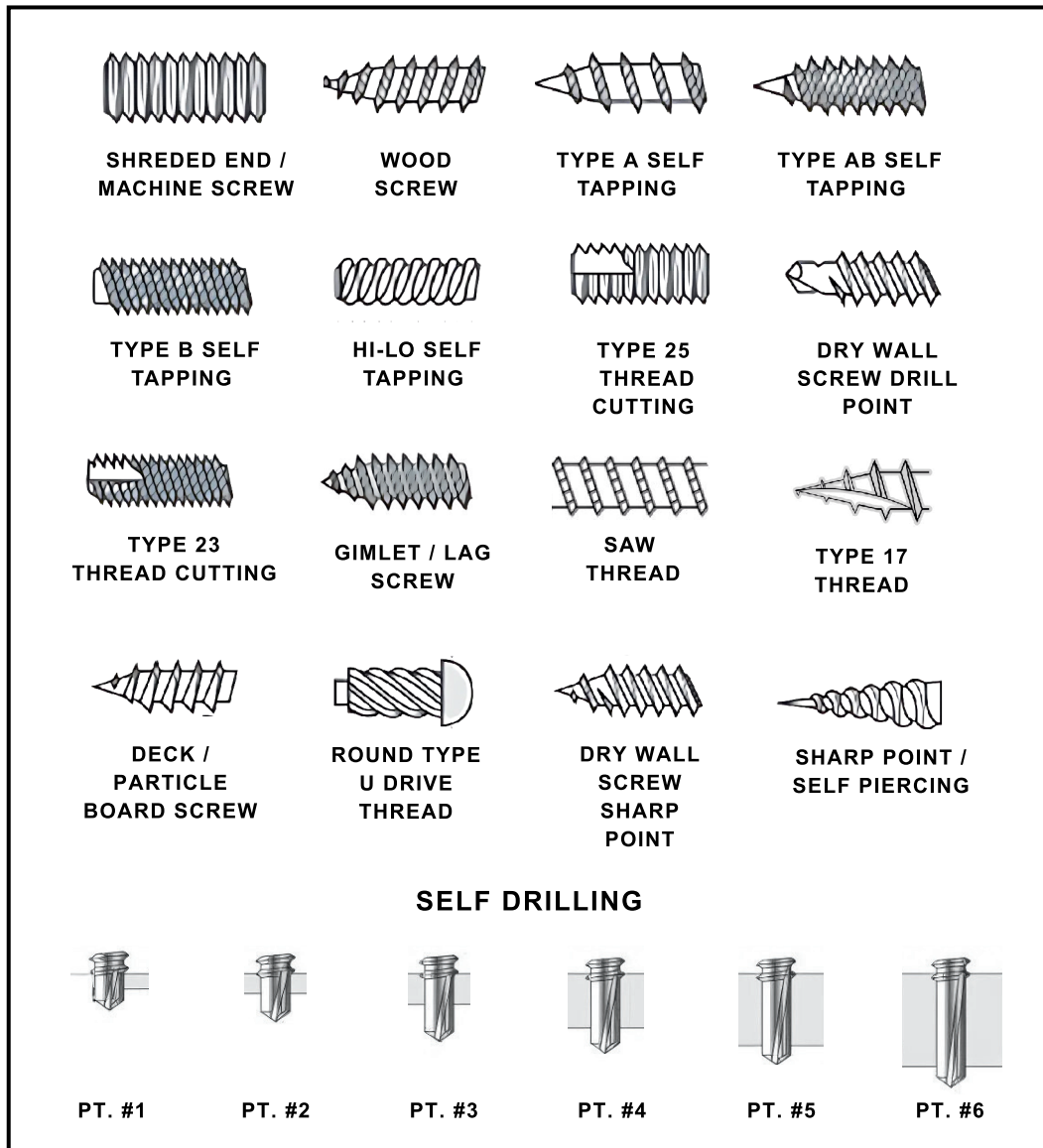


WASHER



SCREWS DATA

POINTS/THREADS STYLES



PLATING

ZN: ZINC

YZ: YELLOW ZINC

BZ: BLUE ZINC

BP: BLACK PHOSPHATED

RG: ROSE GOLD FINISH

GP: GREY PHOSPHATED

GD: GOLD FINISH

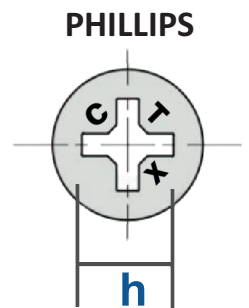
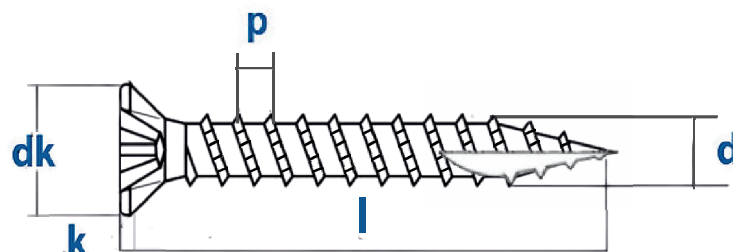
CP: CHROME POLISH

AF: ANTIQUE FINISH

HW: HEAVY WAXED

CTX M.S. CHIPBOARD SCREW

- **Precision Tip Design:** Sharp tip ensures accurate positioning and easy starting on hard surfaces. Point cut prevents splitting and surface cracks.
- **Fast and Clean Insertion:** Saw-tooth threading delivers quick self-tapping and low driving torque. Efficient chip removal prevents material damage during insertion.
- **Strong, Durable, and Reusable:** Hardened construction provides high pull-out resistance. Ideal for hardwoods, plastic, and thin aluminum sheets without damaging finishes.

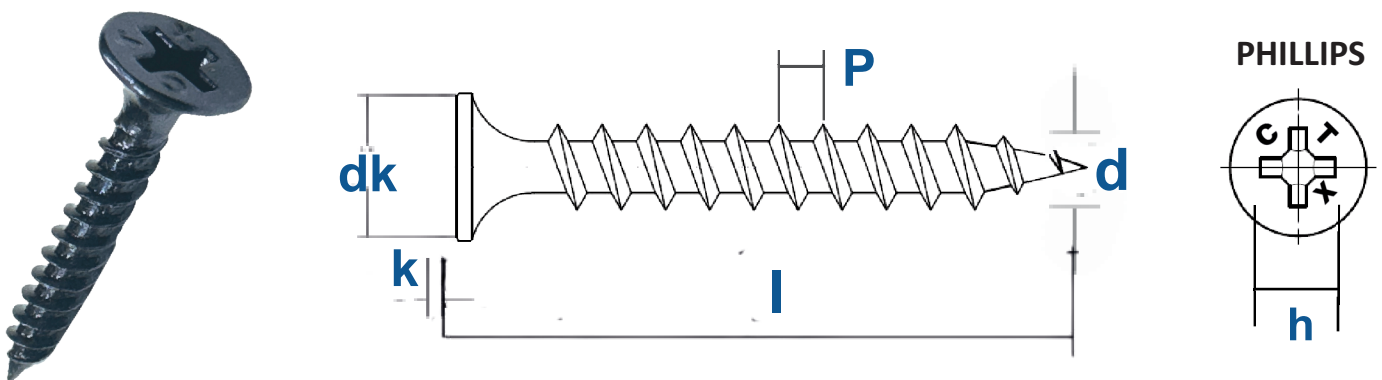


SIZE LENGTH

M 3.0 x	M 3.5 x	M 4.0 x	M 5.0 x	M 6.0 x
	13	16	25	
13	16	20	30	75
16	20	25	35	100
20	25	30	40	125
25	30	35	45	140
	35	40	50	
	40	45	60	
	50	50	75	
		60	100	
		75		

CTX M.S. DRYWALL SCREW

- **Sharp Pointed Tip:** Facilitates easy penetration into drywall and framing materials without pre-drilling.
- **Moderately Wide Threads:** Prevents drywall material from crumbling, ensuring a secure grip.
- **Bugle Head Design:** This design allows the screw to sit flush with the drywall surface, creating a smooth finish and reducing the risk of tearing the paper surface – a common issue with nails.
- **Special Coating:** The black finish is an anti-rust coating that improves corrosion resistance.



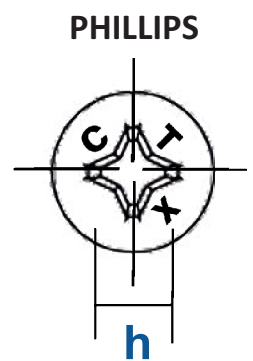
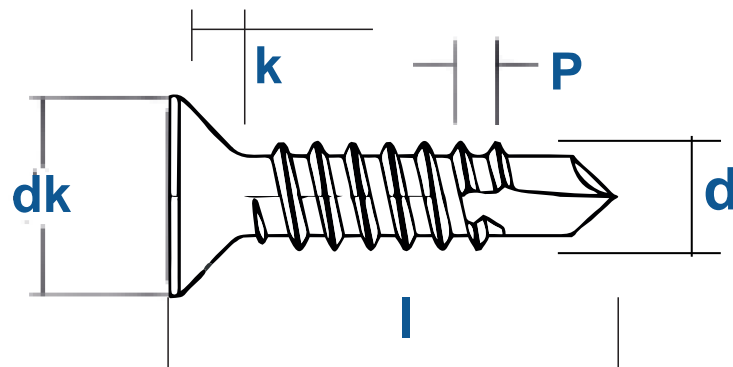
SIZE LENGTH

# 6 x	13	# 8 x	19	# 10 x	50
	16		25		60
	19		32		75
	25		38		100
	32		50		
	38		60		
	50		75		
	60				
	75				

CTX M.S. SELF DRILLING SCREW

FLAT PHILLIPS

- **Flush Finish Design:** Flat CSK Phillips head with cutter ribs enables clean countersinking for a smooth, flush finish.
- **Fast & Stable Drilling:** Self-drilling Z-point tip ensures quicker, more stable penetration into steel without pre-drilling.
- **Durable & Resistant:** Hardened steel with zinc plating offers long-lasting strength ideal for fixing boards and aluminum sections.



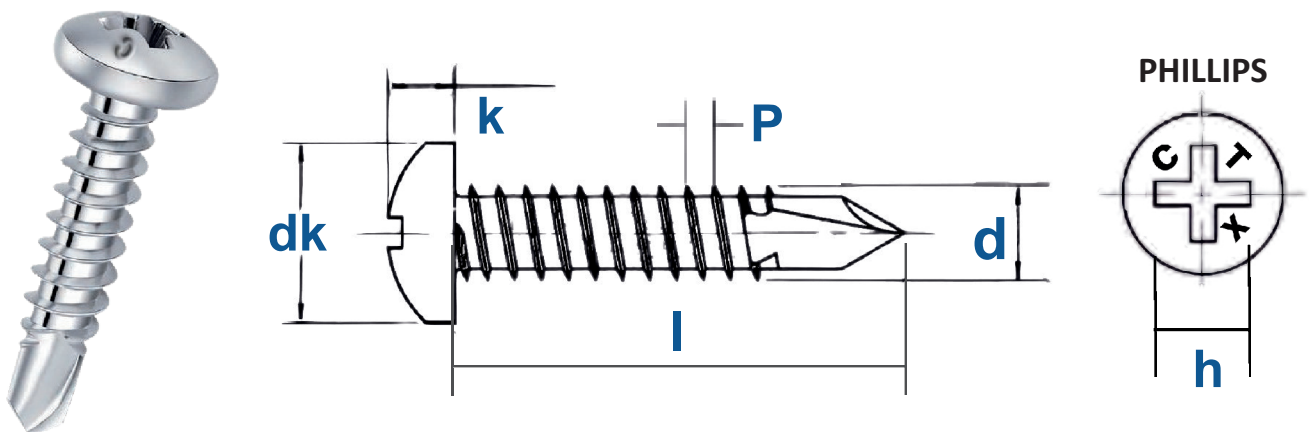
SIZE LENGTH

SIZE	LENGTH			
		M 3.5 x	M 3.9 x	M 4.2 x
	13			
	16			
	19			
	25			
	32			
	38			
	50			
	16			
	19			
	25			
	32			
	38			
	50			
	60			
	75			
	25			
	32			
	38			
	50			
	60			
	75			
	100			

CTX M.S. SELF DRILLING SCREW

PAN PHILLIPS

- **Clean & Easy Installation:** Pan Phillips head offers a broad bearing surface and neat finish; designed for quick, tool-friendly fastening.
- **Quick Steel Penetration:** Engineered Z-point tip drills smoothly through steel, reducing installation time without needing pilot holes.
- **Tough & Long-Lasting:** Constructed from hardened steel with zinc plating to resist corrosion ideal for securing boards, sheet metal, and aluminum profiles.



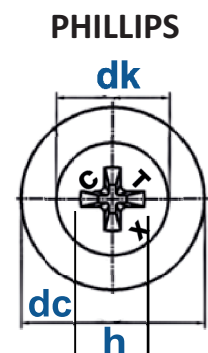
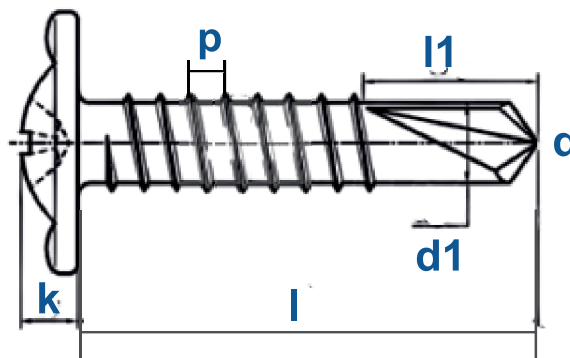
SIZE LENGTH

M 3.5 x	13	M 4.2 x	13	M 4.8 x	19
	16		16		25
	19		19		
	25		25		
			32		
			38		
			50		

CTX M.S. SELF DRILLING SCREW

TRUSS PHILLIPS

- **Precision Head Design:** The Truss Phillips head features a wide, low-profile bearing surface that evenly distributes load and minimizes material deformation, ideal for securing thin or soft materials.
- **Optimized Drilling Efficiency:** Engineered Z-point tip enables fast, clean penetration into steel without pre-drilling, enhancing installation speed and accuracy.
- **Enhanced Structural Integrity:** Manufactured from high-tensile hardened steel with a protective zinc finish, ensuring long-lasting performance in demanding applications like metal framing and board installation.



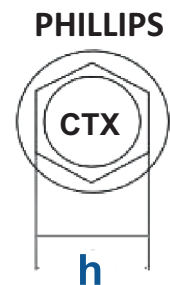
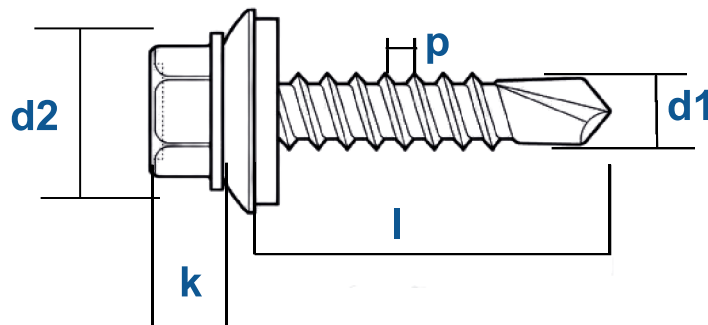
SIZE LENGTH

M 4.2 x	13	M 4.8 x	25
	16		32
	19		38
	25		
	32		
	38		
	50		

CTX M.S. SELF DRILLING SCREW

HEX HEAD

- **Secure Metal-to-Metal Fastening:** Delivers strong, vibration resistant joints in structural steel, HVAC, and framing applications.
- **Time-Efficient Installation:** Self-drilling Z-point tip eliminates pre-drilling, boosting productivity on high-volume jobsites.
- **High Torque Transfer:** Hex head design enables consistent torque application using power tools, ensuring precision and reliability.

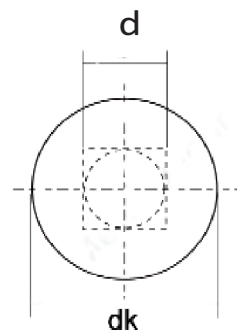
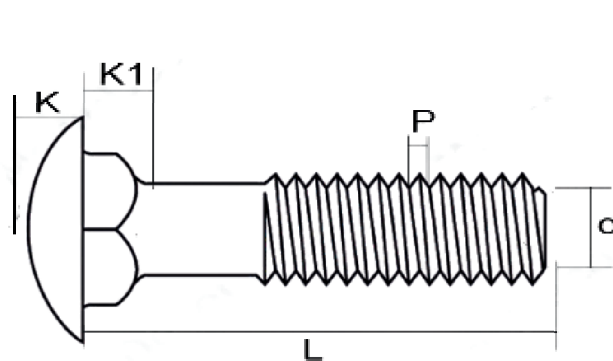


SIZE LENGTH

SIZE		LENGTH	
# 10 x	16	20	100
	20	25	125
	25	35	
		45	
# 12 x		55	
		65	
		75	
		90	

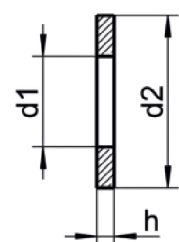
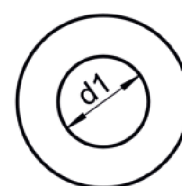
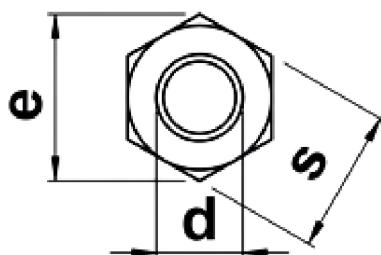
CTX M.S. CARRIAGE BOLT

- **Rounded, Domed Head:** The smooth, shallow dome of the carriage bolt's head provides a clean, flush finish, making it suitable for visible applications where aesthetics are important, such as in furniture construction or decking.
- **Square Neck for Anti-Rotation:** Beneath the head, the square neck prevents the bolt from turning during installation. This feature is particularly useful when the bolt is inserted into a square hole in metal or when used in wood, as it ensures a secure connection without the need for a second tool.
- **Threaded Shaft for Secure Fastening:** The shaft of the carriage bolt is threaded, allowing for a nut to be securely fastened on the opposite side. This threading ensures a tight and durable connection between materials.



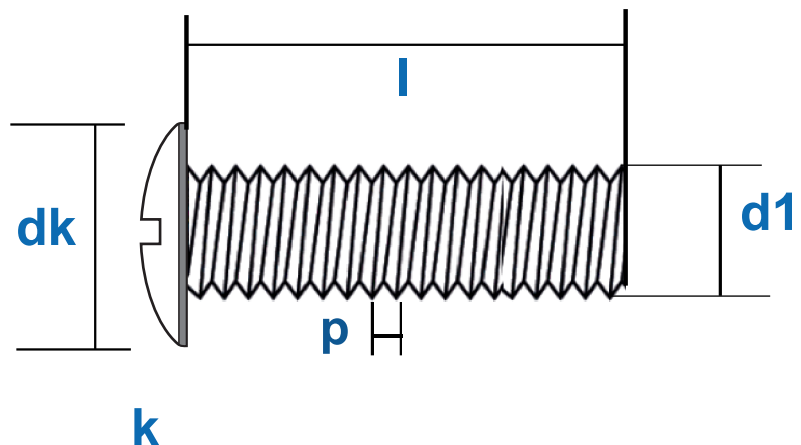
SIZE LENGTH

SIZE	LENGTH
M 6.0 x	37
	45
	50
	62
	75



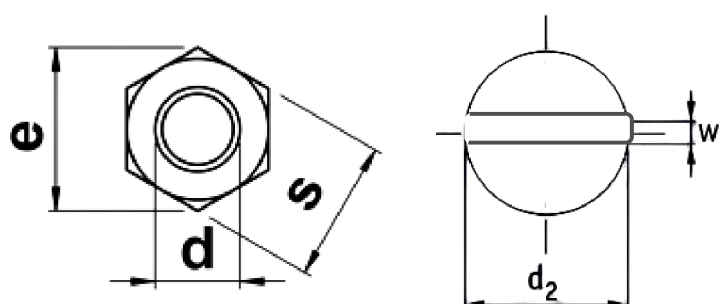
CTX M.S. ROOFING BOLT

- **Wide Slotted Head** – Distributes pressure evenly, ideal for securing roofing sheets without damage or pull-through.
- **Threaded Shank with Nut** – Provides strong, secure fastening in metal or timber structures.
- **Corrosion Resistance** – Galvanized or zinc-coated to prevent rust, which is crucial for outdoor and electrical safety.
- **Earthing Capability** – Commonly used in electrical installations to connect metal roofing components to grounding systems, ensuring safety and conductivity.



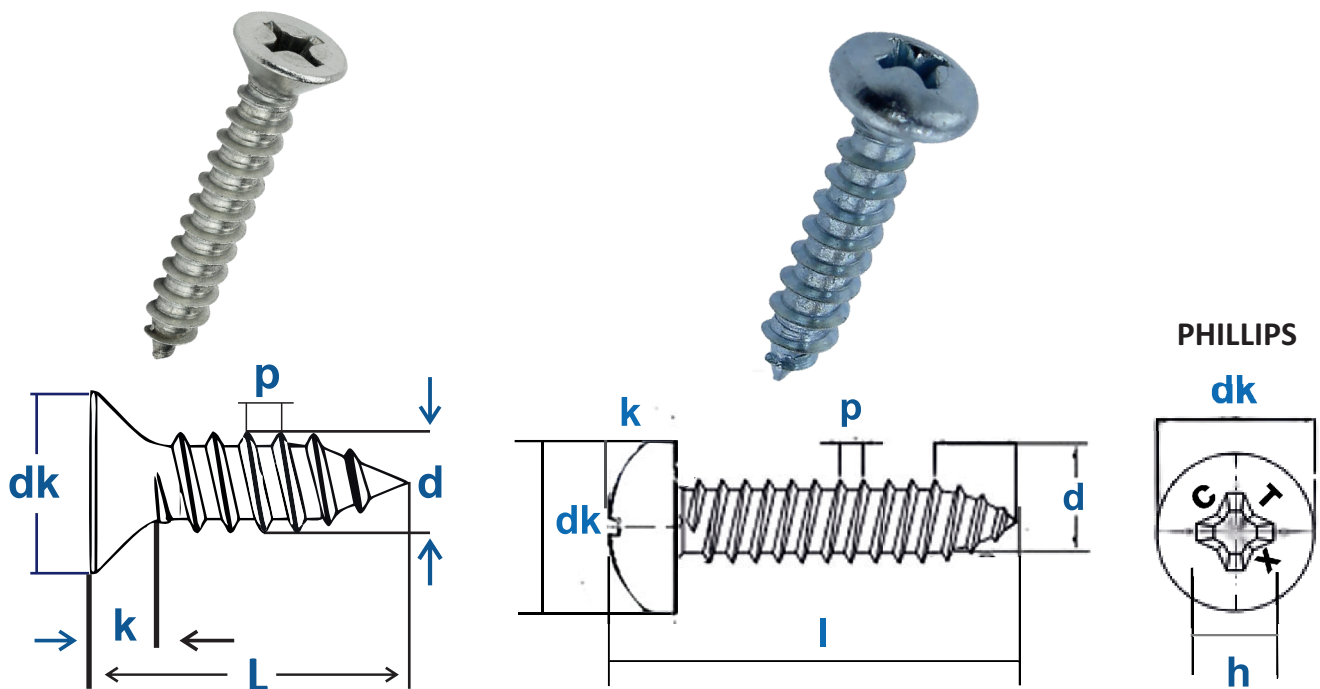
SIZE LENGTH

M 6.0 x	12	100
	19	125
	25	150
	32	
	38	
	50	
	62	
	75	



CTX M.S. SHEET METAL SCREW

- **Precision Fastening in Metalwork:** Sharp threads cut into metal for a strong, tight hold - ideal for sheet metal work.
- **Versatile Industrial Application:** Used in HVAC, automotive, and electrical jobs; suits metal, plastic, and composites.
- **Self-Tapping Capability:** Drills its hole during installation; no pre-drilling needed, saving time.

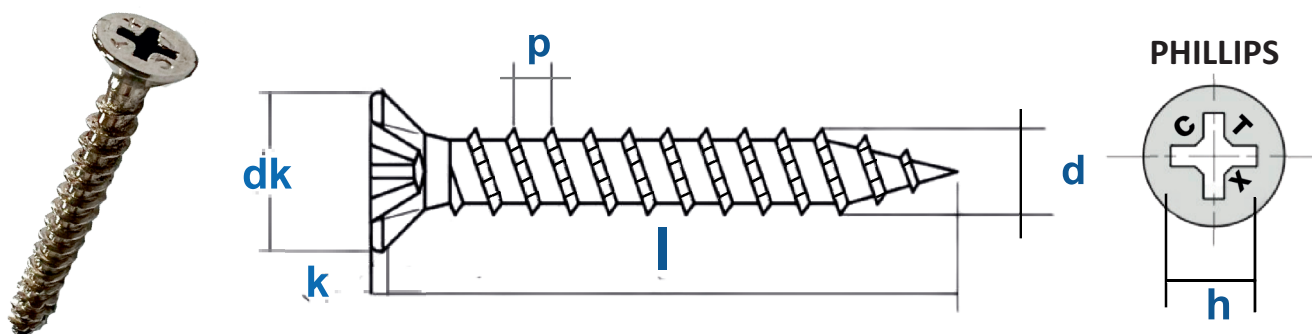


SIZE LENGTH

SIZE	LENGTH						
# 4 x	6.5	# 6 x	6.5	# 8 x	9.5	# 10 x	13
	9.5		9.5		13		16
	13		13		16		19
	16		16		19		25
	19		19		25		32
	25		25		32		38
			32		38		50
			38		50		60
			60				75
							100

CTX S.S. 410 CHIPBOARD SCREW

- **High Hardness:** 410 SS (magnetic) offers superior hardness and wear resistance, ensuring strong and durable screws.
- **Saw-Tooth Threading:** Delivers quick self-tapping action with low driving torque for easier installation.
- **Sharp Point Design:** Allows quick and precise penetration into wood, ensuring secure fastening.

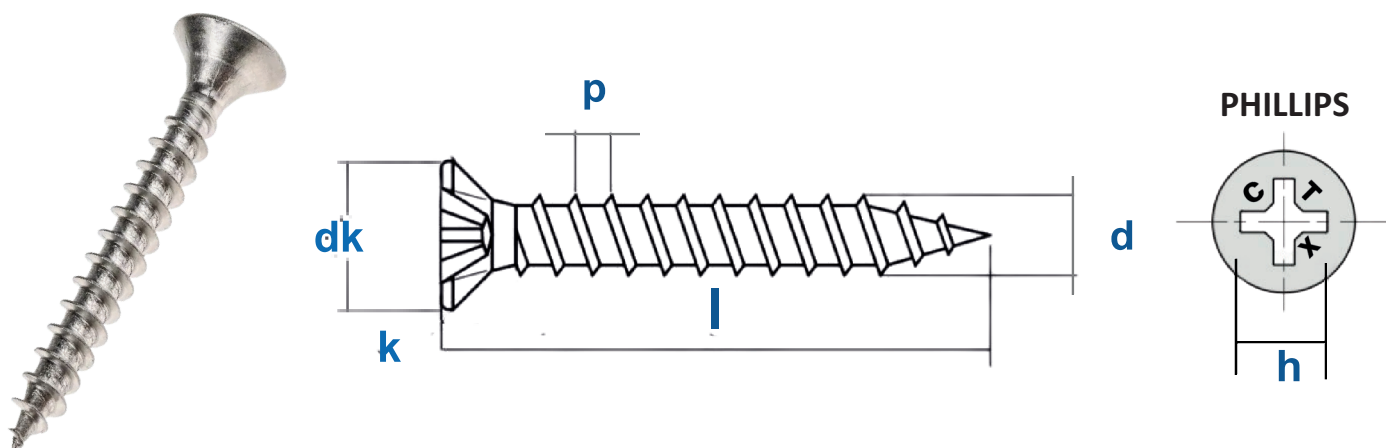


SIZE LENGTH

M 3.5 x	13	M 4.0 x	16	M 5.0 x	25
	16		20		30
	20		25		35
	25		30		40
	30		35		45
	35		40		50
	40		45		60
	50		50		75
			60		100
			75		

CTX S.S. 304 CHIPBOARD SCREW

- **Corrosion Resistant:** 304 Stainless Steel offers exceptional resistance to rust, oxidation, and corrosion. This makes it ideal for both indoor and outdoor environments, including humid or chemically exposed areas.
- **Self-Tapping Tip:** Allows easy, fast installation without pre-drilling.
- **High Strength:** Provides reliable holding power and long-lasting performance in wood applications.

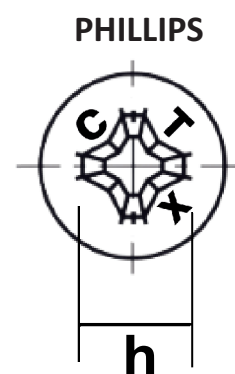
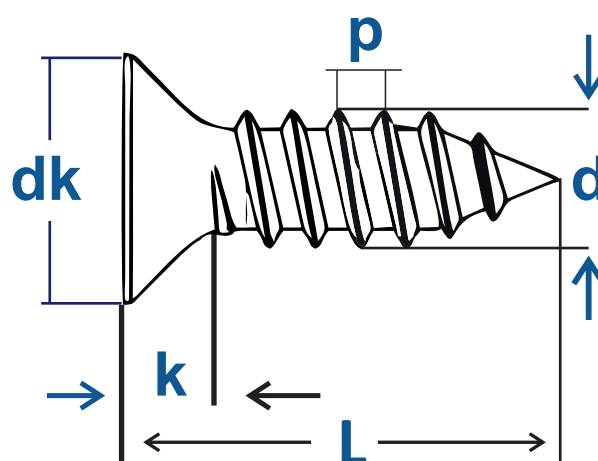


SIZE LENGTH

SIZE	LENGTH	SIZE	LENGTH	SIZE	LENGTH
M 3.5 x	13	M 4.0 x	16	M 5.0 x	25
	16		20		30
	20		25		35
	25		30		40
	30		35		45
	35		40		50
	40		45		60
	50		50		75
			60		100
			75		

CTX S.S. SHEET METAL SCREW

- **Corrosion Resistance:** Stainless steel resists rust, making it ideal for moisture, chemicals, and outdoor use.
- **Self-Tapping Design:** No pre-drilling needed fast, easy installation for quick assemblies.
- **Versatile Applications:** Used in automotive, HVAC, and electronics for strong, precise, fastening.

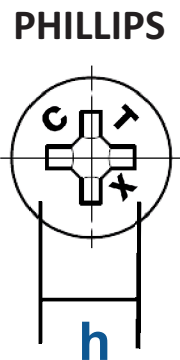
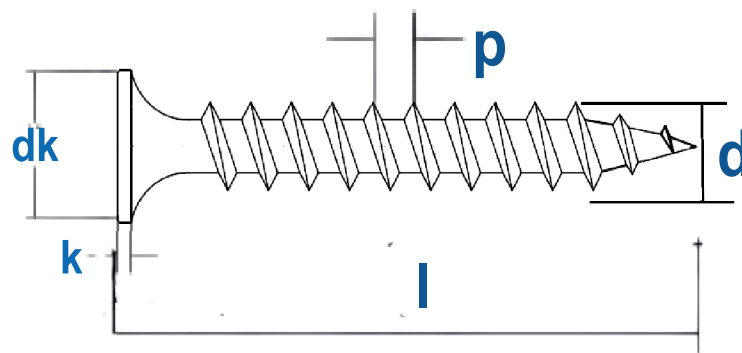


SIZE LENGTH

# 4 x	13	# 6 x	13	# 8 x	16	# 10 x	50
	16		16		19		60
	19		19		25		75
	25		25		32		100
			32		38		
			38		50		
			50		60		
			60		75		

CTX S.S. DRYWALL SCREW

- **Corrosion Resistant:** Stainless steel construction prevents rust and corrosion, making it ideal for humid or outdoor environments.
- **Self-Tapping Point:** Enables easy installation without pre-drilling, saving time and minimizing material splitting.
- **High Strength:** Offers durable and reliable fastening for long-lasting stability.

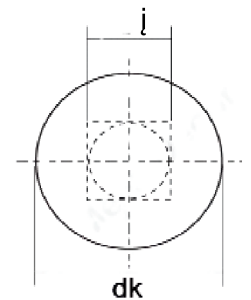
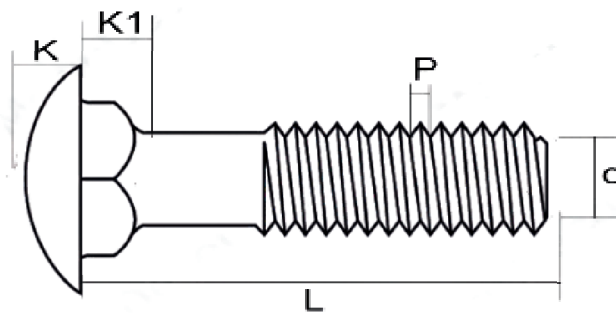


SIZE LENGTH

# 6 x	13	# 8 x	19	# 10 x	50
	16		25		60
	19		32		75
	25		38		100
	32		50		
	38		60		
	50		75		
	60				
	75				

CTX S.S. CARRIAGE BOLT

- **Corrosion Resistance:** Stainless steel carriage bolts resist rust thanks to a chromium oxide layer. Ideal for outdoor, marine, and humid environments. They ensure long-lasting durability in tough conditions.
- **Tamper-Resistant Design:** The domed head prevents gripping from the unsecured side. Difficult to remove without proper tools, enhancing security. Great for one-sided access in safety applications.
- **Self-Locking Square Neck:** The square neck fits snugly into square holes to prevent turning. No need for a second tool during installation. Ensures a tight, hassle-free fit every time.



SIZE LENGTH

M 6.0 x

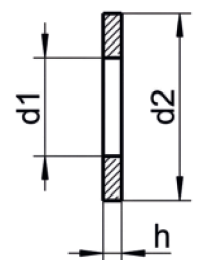
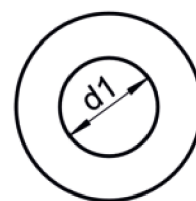
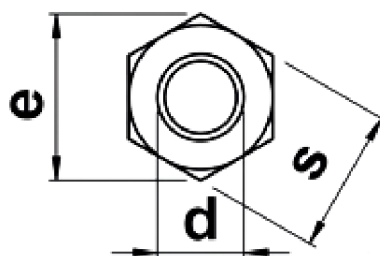
37

45

50

62

75



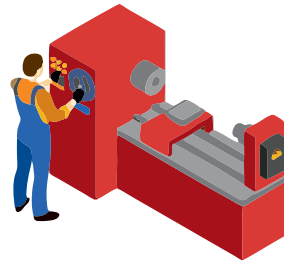
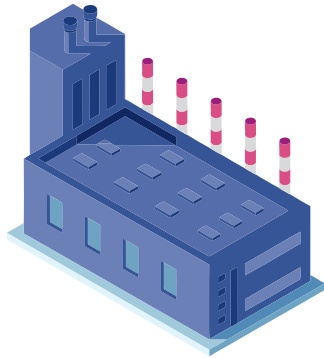
- **Flush Finish Design:** Flat CSK Phillips head allows clean countersinking for a smooth, flush surface.
- **Fast & Stable Drilling:** Self-drilling Z-point tip enables quick, stable penetration into metal without pre-drilling.
- **Durable & Corrosion Resistant:** Made from stainless steel for long-lasting strength and excellent rust resistance ideal for securing boards and aluminium sections.

17

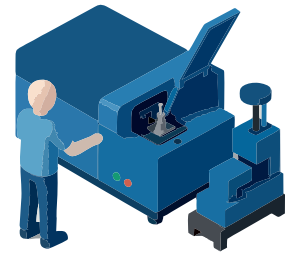
PRODUCT RANGE

CHIPBOARD SCREW	DRYWALL SCREW	SDS CSK FLAT PHILLIPS HEAD	SDS PAN PHILLIPS HEAD
			
SDS TRUSS PHILLIPS HEAD	SDS HEX	CARRIAGE BOLT BCP	ROOFING BOLT
			
SHEET METAL SCREW	S.S. 410 CHIPBOARD SCREW	S.S. 304 CHIPBOARD SCREW	S.S. SHEET METAL SCREW
			
S.S. DRYWALL SCREW	S.S. CARRIAGE BOLT	SDS S.S. FLAT PHILLIPS HEAD	AND MANY MORE....
			

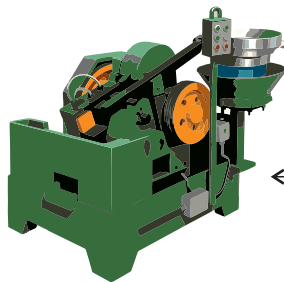
MANUFACTURING PROCESS



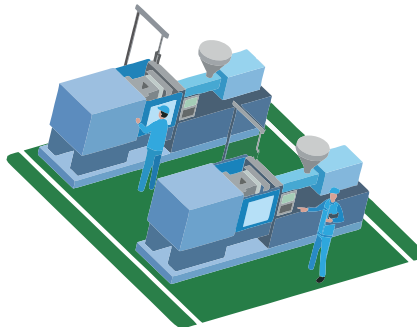
01 RAW MATERIAL
WIRE DRAWING



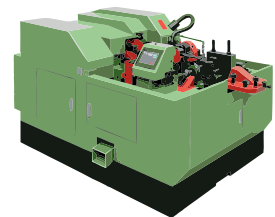
02 QUALITY CHECK
OF WIRE



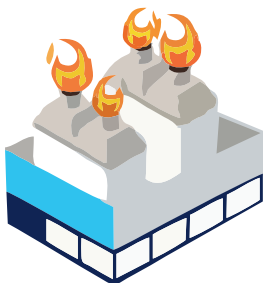
05 THREADING
PROCESS



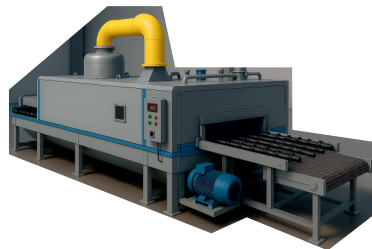
04 POINTING
PROCESS



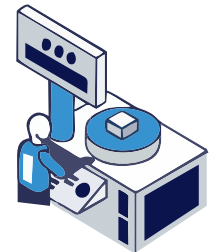
03 HEADING
PROCESS



06 HEAT
TREATMENT



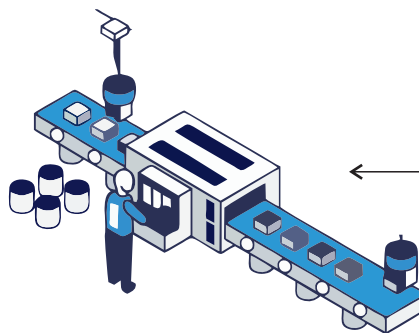
07 SURFACE
TREATMENT



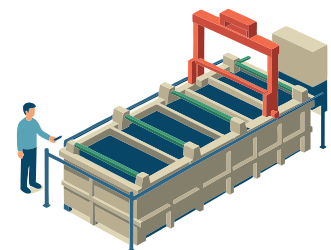
08 QUALITY CONTROL
EVALUATION



11 PACKING &
DISTRIBUTION



10 WASHER
ASSEMBLY



09 PLATING
PROCESS



**SCAN HERE
FOR MORE
INFORMATION**

AUTHORISED STOCKIST
